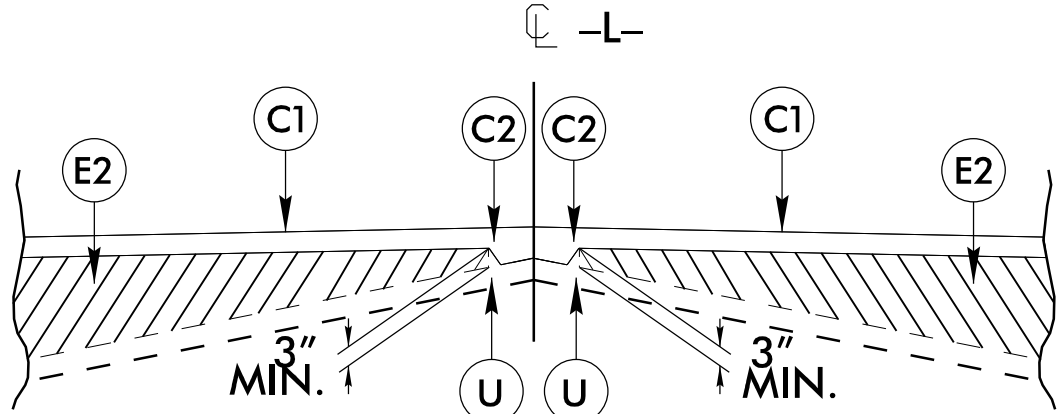
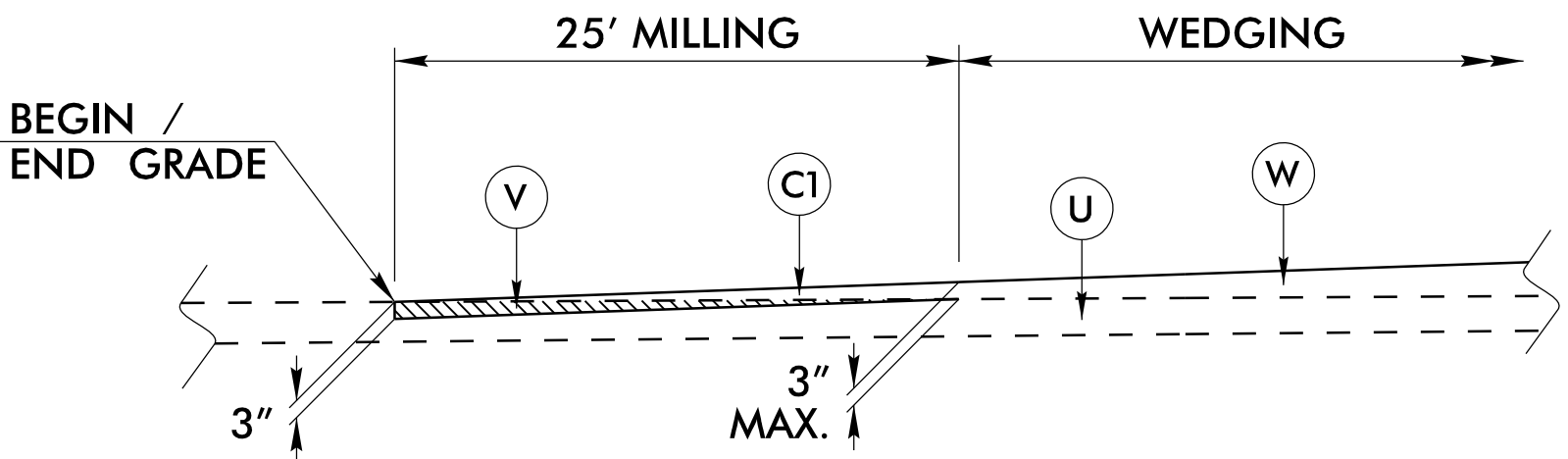


PAVEMENT SCHEDULE	
C1	PROP. APPROX. 3" ASPHALT CONCRETE SURFACE COURSE, TYPE S9.5B, AT AN AVERAGE RATE OF 165 LBS. PER SQ. YD. IN EACH OF TWO LAYERS.
C2	PROP. VAR. DEPTH ASPHALT CONCRETE SURFACE COURSE, TYPE S9.5B, AT AN AVERAGE RATE OF 110 LBS. PER SQ. YD. PER 1" DEPTH. TO BE PLACED IN LAYERS NOT LESS THAN 1" IN DEPTH OR GREATER THAN 1.5" IN DEPTH.
E1	PROP. APPROX. 4" ASPHALT CONCRETE BASE COURSE, TYPE B25.0C, AT AN AVERAGE RATE OF 456 LBS. PER SQ. YD.
E2	PROP. VAR. DEPTH ASPHALT CONCRETE BASE COURSE, TYPE B25.0C, AT AN AVERAGE RATE OF 114 LBS. PER SQ. YD. PER 1" DEPTH. TO BE PLACED IN LAYERS NOT LESS THAN 3" IN DEPTH OR GREATER THAT 5.5" IN DEPTH.
R1	SHOULDER BERM GUTTER
T	EARTH MATERIAL
U	EXISTING PAVEMENT
V	MILLING, 0"-3"
W	VARIABLE DEPTH ASPHALT PAVEMENT (SEE WEDGING DETAIL)

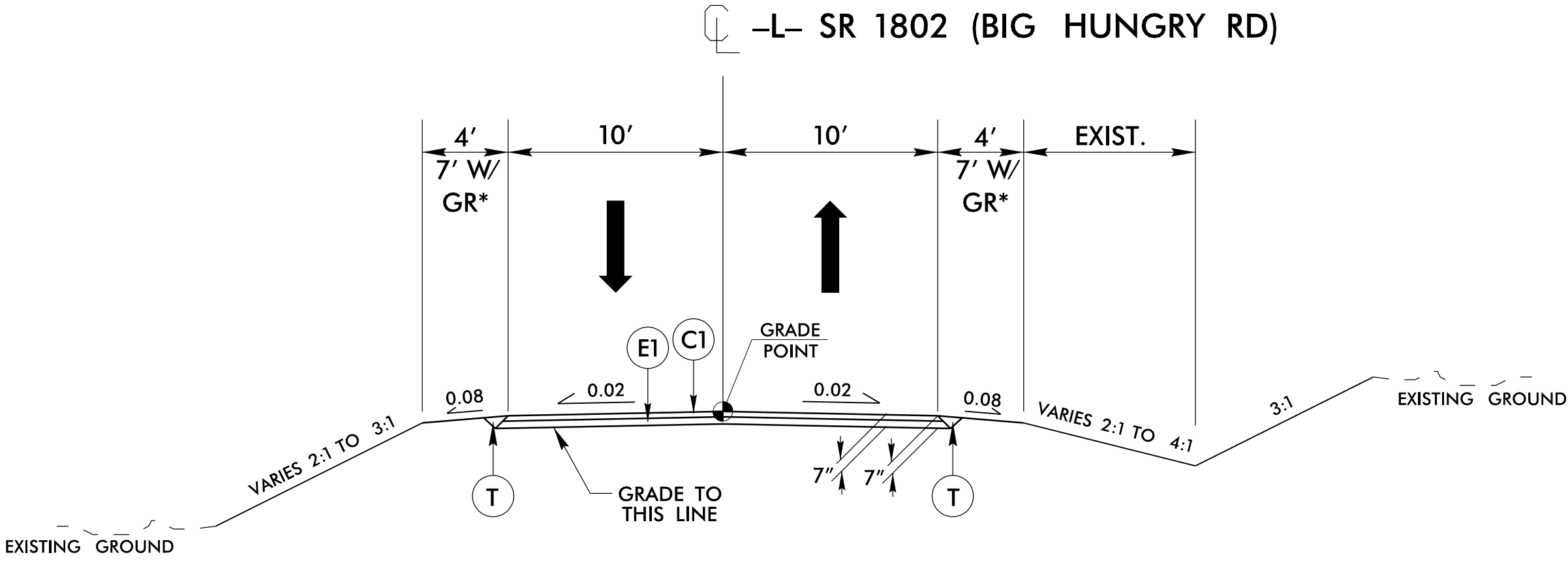
NOTE: ALL PAVEMENT SLOPES 1:1 UNLESS NOTED OTHERWISE



STANDARD WEDGING DETAIL

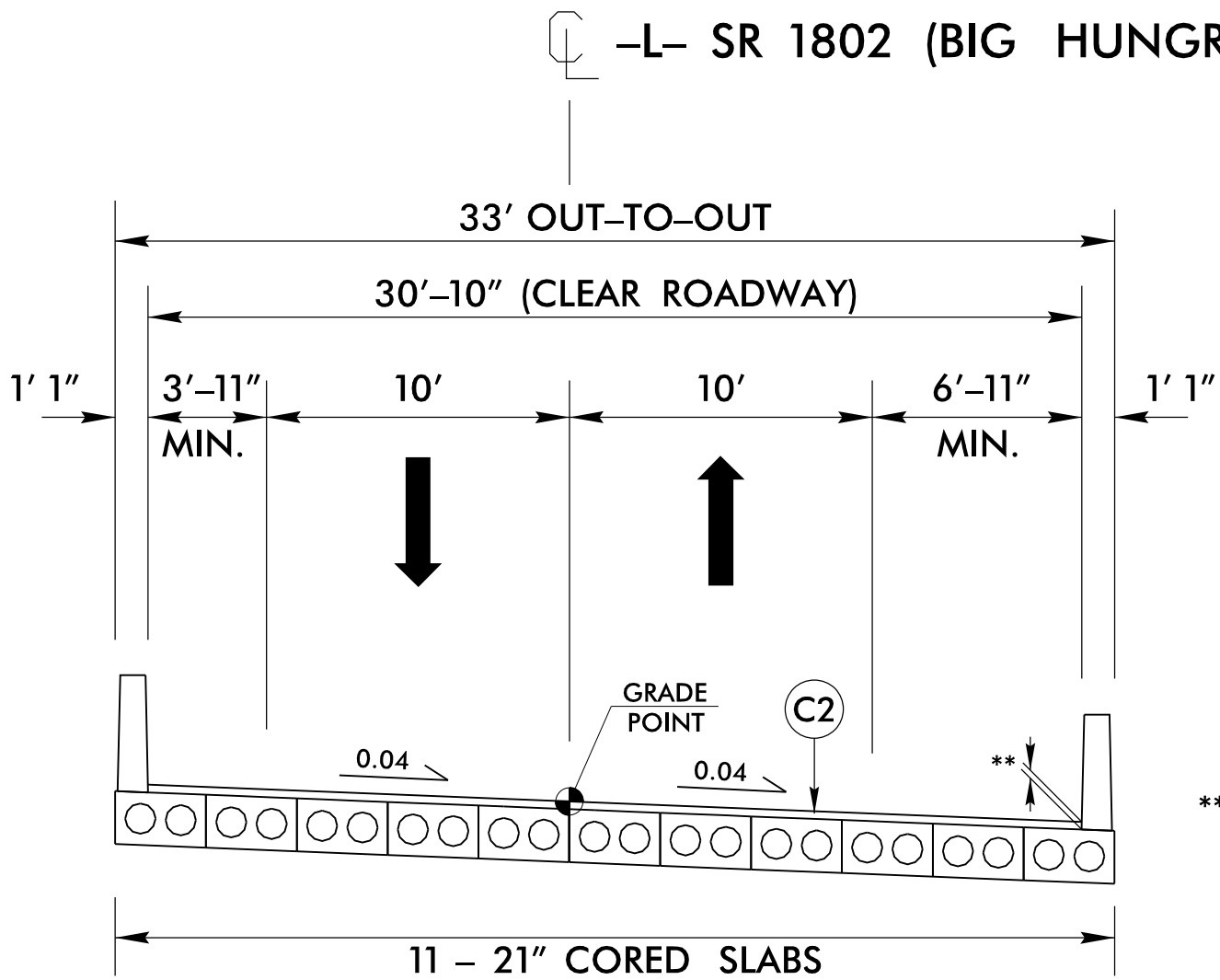


DETAIL OF 3.0" MILLING AT PAVEMENT TIE-INS AS NEEDED



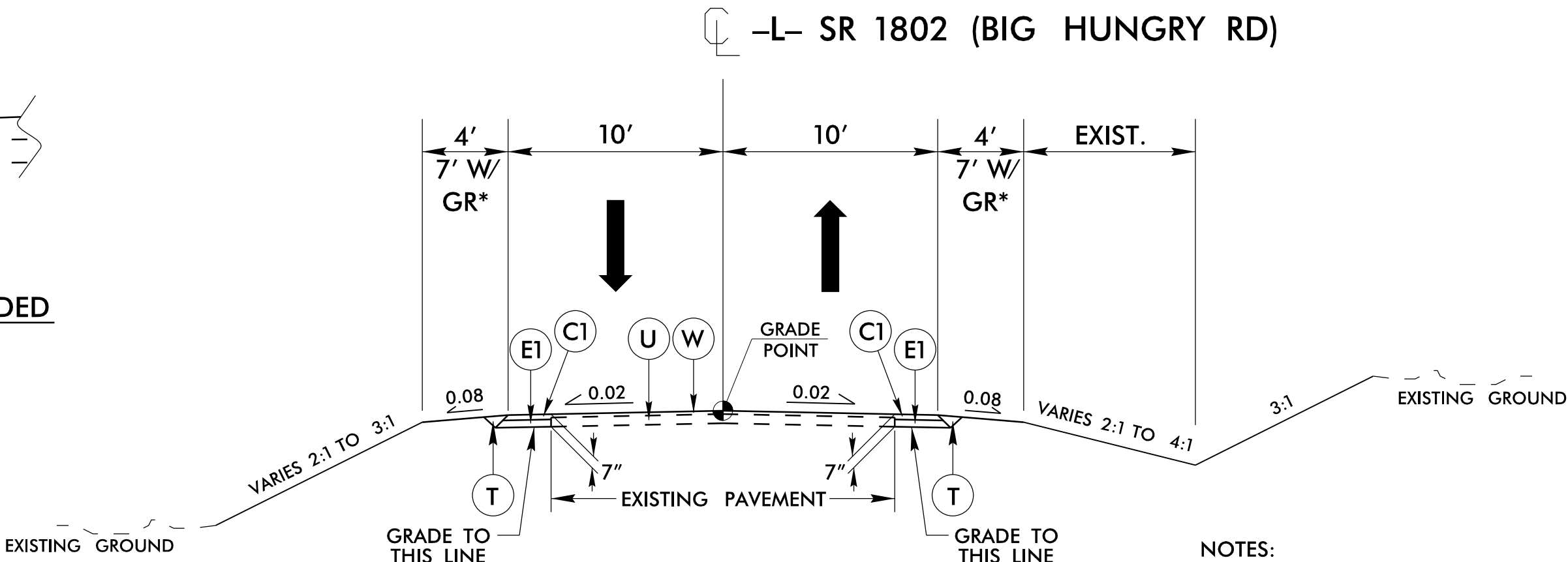
TYPICAL SECTION NO. 01

-L- STA. 11+60.00 TO -L- STA. 13+03.20 (BEGIN BRIDGE)



TYPICAL SECTION NO. 02

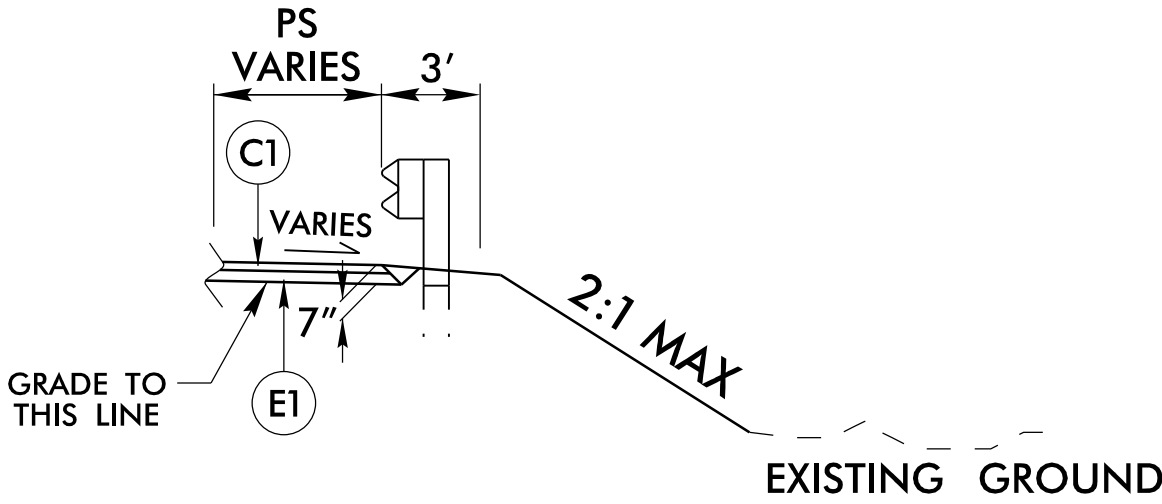
-L- STA. 13+03.20 (BEGIN BRIDGE) TO -L- STA. 14+38.56 (END BRIDGE)



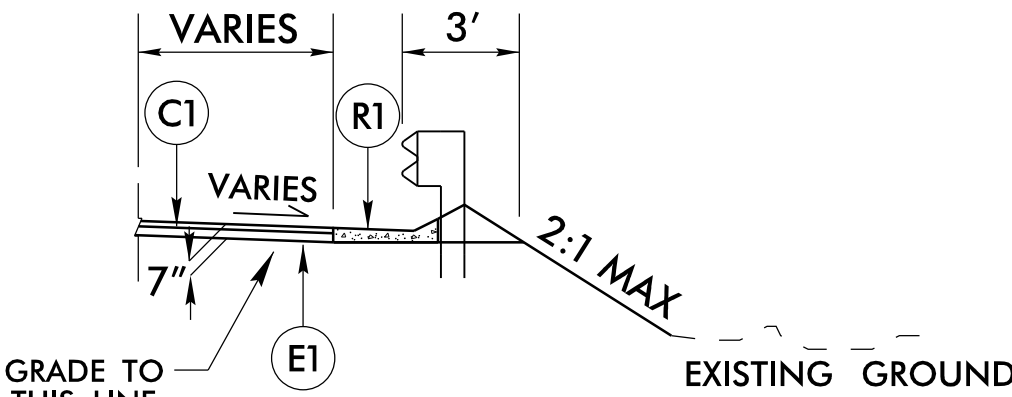
TYPICAL SECTION NO. 03

-L- STA. 14+38.56 (END BRIDGE) TO -L- STA. 15+50.00

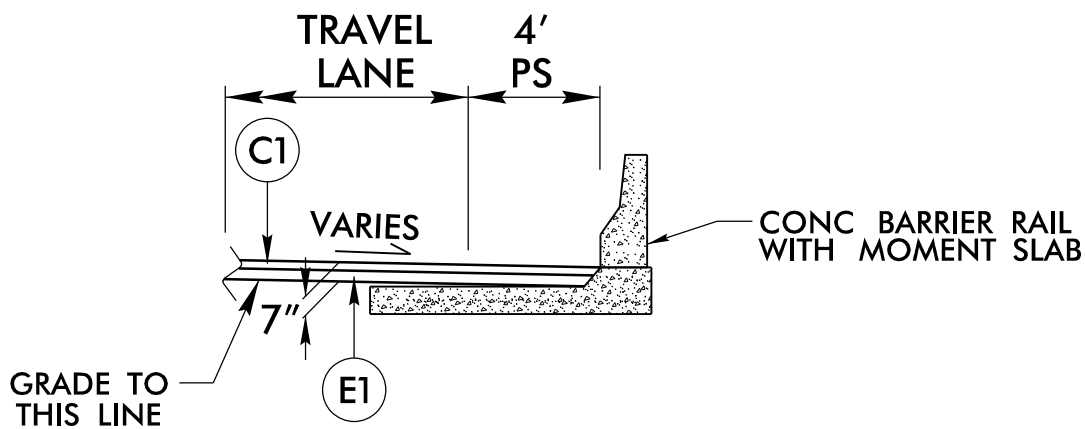
- NOTES:
1. FROM -L- STA. 15+50.00 RT TO -L- 17+00.00 RT
PAVE TO GUARDRAIL FACE AS SHOWN ON
GUARDRAIL DETAIL ON THIS SHEET
 2. FROM -L- STA. 15+07 +/- RT TO -L- STA. 16+75 +/- RT
SEE WIRE MESH SLOPE PROTECTION DETAIL
(SHEETS 2G-1 & 2G-2)



*DETAIL WITH GUARDRAIL
USE IN CONJUNCTION WITH GUARDRAIL ON -L-
(SEE PLAN SHEET 04 AND CROSS SECTIONS)



DETAIL WITH SHOULDER BERM GUTTER AND GUARDRAIL
USE IN CONJUNCTION WITH TYPICAL SECTION NO. 01
-L- STA. 12+75.00 TO 13+01.00 RT



*DETAIL FOR CONC BARRIER WITH MOMENT SLAB
USE IN CONJUNCTION WITH TYPICAL SECTION NO. 01
-L- STA. 14+57.70 TO 14+85.00 RT
(SEE PLAN SHEET 04, CROSS SECTIONS
AND STRUCTURE PLANS)